

Alberta Chamber of Resources

Environmental Forum

November, 2009

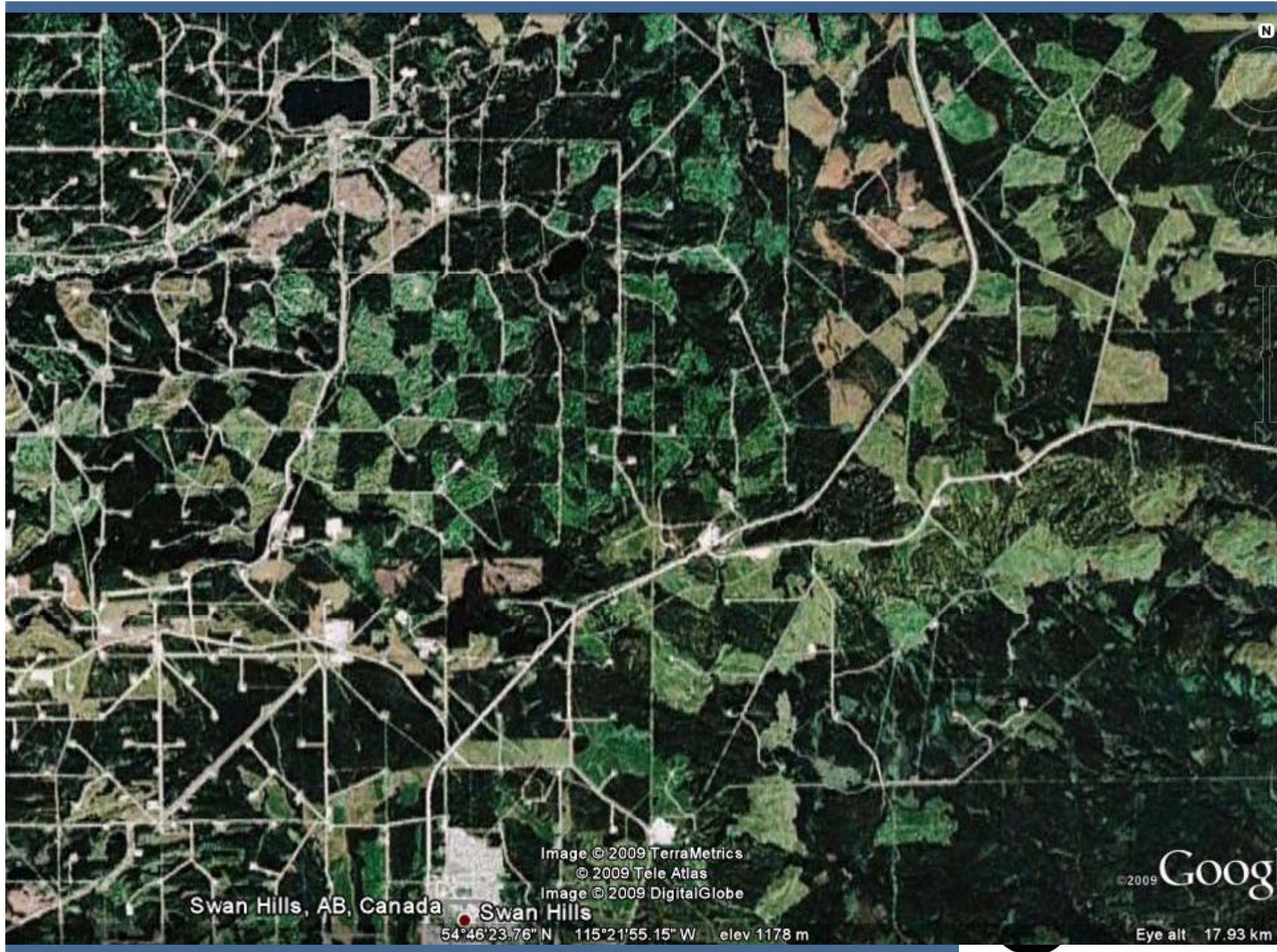


Land Use Framework

Observations

Today's issues

- Economic downturn
- Climate change – Copenhagen
- Competitive issues
 - Regulatory realignment
 - Enhance approval
 - Forest industry competitive strategy
- Bio energy
- Power transmission
- Parks Plan
- Land use Framework



Swan Hills, AB, Canada

Swan Hills

54°46'23.76" N 115°21'55.15" W elev 1178 m

Image © 2009 TerraMetrics
© 2009 Tele Atlas
Image © 2009 DigitalGlobe

©2009 **Goog**

Eye alt 17.93 km

What did industry want

- Certainty
- Opportunity

Land Use Framework

- Early in the process
- No plans out in draft form yet
- Will be land use planning as we haven't seen it before

LUF is different

- Managed by LUS
 - No department alignment
 - Resources to get the job done
 - Recognized in provincial priorities
- Strong legislation –ALSA
- Cumulative effects based
- 7 regions
- 3 years
- Cabinet approval

LUF Strategies

- Develop 7 regional land-use plans
- Create a Land-use Secretariat and regional Advisory committee
- Cumulative effects management will be used ..to manage the impacts of development on land, water and air
- Develop a conservation and stewardship strategy for private and public lands
- Promote efficient use of land to reduce footprint of human activities
- Establish an information, monitoring and knowledge system to contribute to continuous improvement of land –use planning and decision making
- Inclusion of aboriginal peoples in land-use

ALSA

- Don't need advice to develop or amend a plan
- Can modify or terminate dispositions
- No legal recourse
- Compensation described in whatever act your disposition came from
- Regional plan becomes regulation
- Thresholds likely to be an outcome
- All related plans and legislation need to be in line with regional plans
- A government run planning process with Cabinet approval

How significant

- First trade-off made in the TOR of the Lower Athabasca Plan
 - Basis of plan will be bitumen production
 - Long term timber supply for forest industry will need strategies to mitigate shortfalls
 - 20% conservation target in addition to Special Places 2000 effort
 - Market based tools

The picture isn't complete yet

- Cumulative effects legislation
- Conservation and stewardship strategy
- Market based Instruments

Expectations

- Transparency
- An understanding of the CEA approach
 - How are tradeoffs made
- Time to make transitions
- Broad role for RAC

Multiple Use, Integrated resource management, Ecosystem management

- Sometimes took years
- Didn't resolve issues – no tradeoffs
- Outdated where there were IRPs

Challenges

- Managing thresholds
 - Market based approach
 - Compliance based approach
- Adjusting thresholds and plans quickly where needed

Thresholds

- Identify capacity for some element within a region
 - Disturbance
 - Access
 - Wildlife habitat
 - Emissions
- Management systems will have to change to deal with these.

Integrated Landscape Management

- Serves to promote a reduced industrial footprint
- Collaborative between companies and between sectors
- Business to business solutions are key

Going forward

- Regional plans
- Industry/Government collaboration
- Business to business solutions key to minimizing the effect of regulatory approach

Going forward

- Public process said take a leadership role
- Process creates short term uncertainty but there is a chance of longer term certainty
- There may be pain suffered by those who don't "win" in the trade-offs
- Managing in a new environment of cumulative effects and Thresholds will be challenging